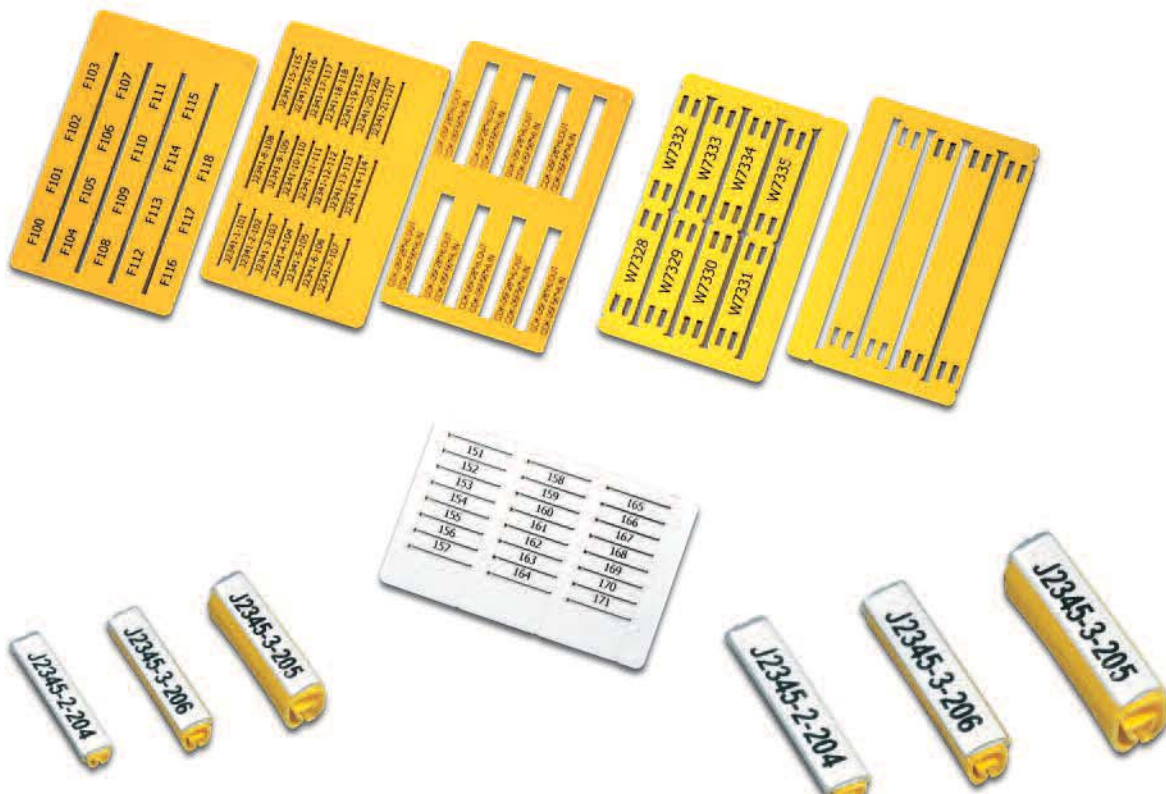




MTX-MK3-P330 Section



MTX-MK3-P330

NEW!



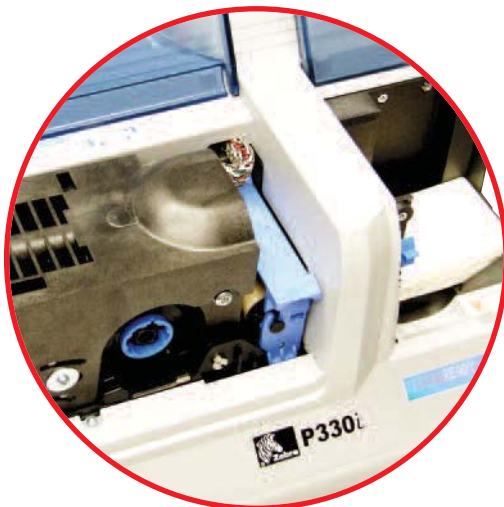
MTX-MK3-P330

- Cable, wire and component marking system X-CARD for more efficient and versatile marking on site.



- Prints various marker tags on credit card type format (Type PFC) accomodating also project and mounting information directly on the card.

- A user friendly compact system with high production capacity.



- Printing on site with PC controlled thermotransfer printer in monochrome or color.



MTX-MK3-P330

Production on Site

Specifications

General

The MTX-MK3-P330 printer is a high resolution high speed production thermo transfer printer for both monochrome and color printout. Loaded with a number of cards in a feeder magazine the printer feeds the cards one by one through the printer, where all the individually tags are printed row by row. The ready printed cards are automatically fed to an output magazine. The printer is controlled by WinSign (WSG-NG-INCL) software. Different marking file formats can be imported.

System Layout

The X-Card system comprises of the MTX-MK3 printer, software winSign and marker tag cards type PFC for cable, wire and component marking. Some PFC cards are used together with Partex holder system PTPLUS, PTZPLUS, PTC, PM10, PM20, PM24 and PS20T. Other cards are used for direct marking and are attached with Ty-Rap® cable ties.

Thermo Transfer

300 dpi Resolution

Printing Speed

4 seconds per card for resin black ink.
25 seconds per card four full color single sided (YMCKO)

Software

WinSign-NG-INCL

Communication Interface

USB 1.1 cable included

Power Connection

110 VAC-240 VAC, 50 – 60 Hz.
FCC Class B, CE, UL and CUL approved

Measurements

(L x W x H): 462x239x256mm

Weight

7 kg

Temperature Range

Operating temperature range: +15°C to +70°C (60°F to 86°F)
Operating humidity: 20% to 65% non-condensing
Storage temperature: -5°C to 70°C (23°F to 158°F)

MTX-MK3-P330

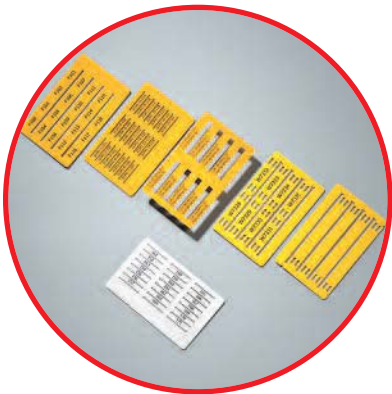


Applications



Product and ordering information

Article Number	Description	Contents
MTX-MK3	MTX-MK3 Thermal Printer type P330	Printer + WinSign + USB Cable
MTX-MK3-USB	MTX-MK3 Interface Printer Cable	
MTX-MK3-CLEANKIT	Cleaning Kit for MTX-MK3-P330	Swab + Cleaning Cards + Rollers
MTX-MK3-CR	Cleaning Roller for MTX-MK3-MC	To Remove Dust from the Card Before Printing
MTX-MK3-F301E	Printer Ribbon F301 Black	
MTX-MK3-RC330	Printer Ribbon RC330 Color	



- The MTX-MK3-P330 system contains several different card types that covers the need for cable, wire and component markers.
- With the MTX-MK3-P330 it is now possible to print in color. This is can only be done if you have the latest version of WinSign.

Product and ordering information

Article Number	Description	Marker Tag Length x Height mm (in)	Marker Tags per Card	Marker Tags per Box	Material	Suitable Partex Holder System
PFC04212KA ⁰	Marker Tag – Wire	12 x 4.2	21	525	ABS	PTPLUS type (refer to page 40)
PFC04215KA ⁰		15 x 4.2				
PFC04218KA ⁰		18 x 4.2				
PFC04221KA ⁰		21 x 4.2				
PFC07533KA ⁰	Marker Tag – Cable	33 x 7.5	9	225	Polyamid / PA11	PM type (refer to page 39)
PFC09518KA ⁰	Marker Tag – Component / Cable	18 x 9.5	20	500		
PFC09540KA ⁰		40 x 9.5	8	200		
PFC09580KA ⁰	Marker Tag – Cable Marking	80 x 9.5	4	100		Cable ties (refer to page 10)

0 = Card Color, 4 = Yellow, 9 = White