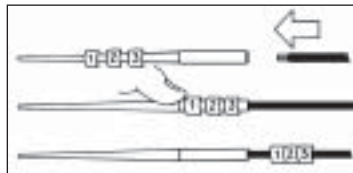


# ACCESSORIES

## SMS Sleeve Markers – Application Tool



Cat. No.	Material	Recom. wire dia. (in.)	AWG	Std Pack.	Use With	Price / ea
<b>SMAT118</b>	Teflon Coated Stainless Steel	0.051 – 0.118	22–16	1 Tool	SMS118	15.48
<b>SMAT196</b>		0.098 – 0.196	16–10		SMS196	



## Magazine Dispenser – Feeds Left or Right



The magazine dispenses SMS sleeves, it has two identical lids, linked by a hinge on one side. The outer sides of the lids have grooves for storing SMS series markers strips.

Material: Polystyrene

Cat. No.	Color	AWG	Marker Type	Std Pack.	Includes Tool	Price / ea
<b>SMMDT118-E</b>	–	–	–	–		19.25
<b>SMMDT118-9-0-9</b>	White	22–16	SMS118	1 = 20 strips of 25 Markers/dispenser 0–9	SMAT118	49.00
<b>SMMDT118-4-0-9</b>	Yellow					
<b>SMMDT196-E</b>	–	–	–	–		19.25
<b>SMMDT196-9-0-9</b>	White	16–10	SMS196	1 = 20 strips of 25 Markers/dispenser 0–9	SMAT196	49.00
<b>SMMDT196-4-0-9</b>	Yellow					

Refill markers order SMS118 or SM196 series, see page 4.

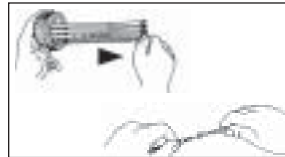
# ACCESSORIES

## SMMW Installation Magazine for SMS Sleeves Complete marking kit for marking on site

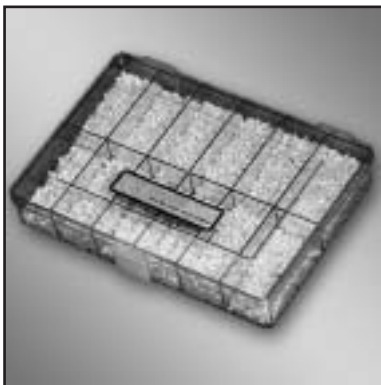


Cat. No.	Color	Recommended wire diameter (in.)	AWG	Std Pack.	Price / EA
<b>SMMK118-4</b>	Yellow	0.051-0.118	22-16	1 = Bags of 20 Wands 20 Wands of 25 Markers 0-9, L, R, S, T, Neutral, Ground, Blue -, Red +, grey, Neutral	49.00
<b>SMMK118-9</b>	White				
<b>SMMK196-4</b>	Yellow	0.098-0.196	16-11		
<b>SMMK196-9</b>	White				

Consult your Regional Sales Office for other kit combinations.  
Refill markers order SMS118 or SM196 series, see page 4.



## SMCB Sleeve Marker Compartment Case



Cat. No.	Contents	Marker Qty/ Compartment	Std Marker Pkg per Case	Price / ea
<b>SMCB12-E</b>	-	0/12	Empty case	25.99
<b>SMCB12-118-4</b>	SMS118 series 22-16 AWG	1000 pcs/12	Yellow/Black = 0-9 Red/White = + Blue/White = -	269.00
<b>SMCB12-118-9</b>			White/Black = 0-9 Red/White = + Blue/White = -	
<b>SMCB18-E</b>	-	0/18	Empty case	27.99
<b>SMCB18-196-4</b>	SMS196 series 16-11 AWG	200 pcs/18	Yellow/Black = 0-9 Red/White = + Blue/White = -	127.99
<b>SMCB18-196-9</b>			White/Black = 0-9 Red/White = + Blue/White = - Yellow/Green = $\frac{1}{1}$ White = neutral Grey = neutral White/Black = R,S,T	

SMCB12 is a 12 compartment transparent case in Polystyrene. SMCB18 is a 18 compartment with a transparent lid.